



LOCATION

La Cala de Mijas

La Cala de Mijas is a true haven on the Costa del Sol, offering everything you could desire

for a perfect Mediterranean lifestyle. Perfectly situated between Marbella and Málaga, this charming seaside town is one of the most tranquil and inviting areas along the coast, ideal for those seeking both relaxation and convenience.

Just 25 minutes from Málaga Airport, La Cala de Mijas provides effortless access to the world. The less explored beaches, vibrant center, and a wide selection of exquisite restaurants are all within easy reach, allowing you to enjoy the best of the region with ease.



A premier golf destination



GOLF CLUBS

- 2" La Cala Golf
- 10" Calanova Golf
- 12" Cabopino Golf
- 20" Chaparral Golf

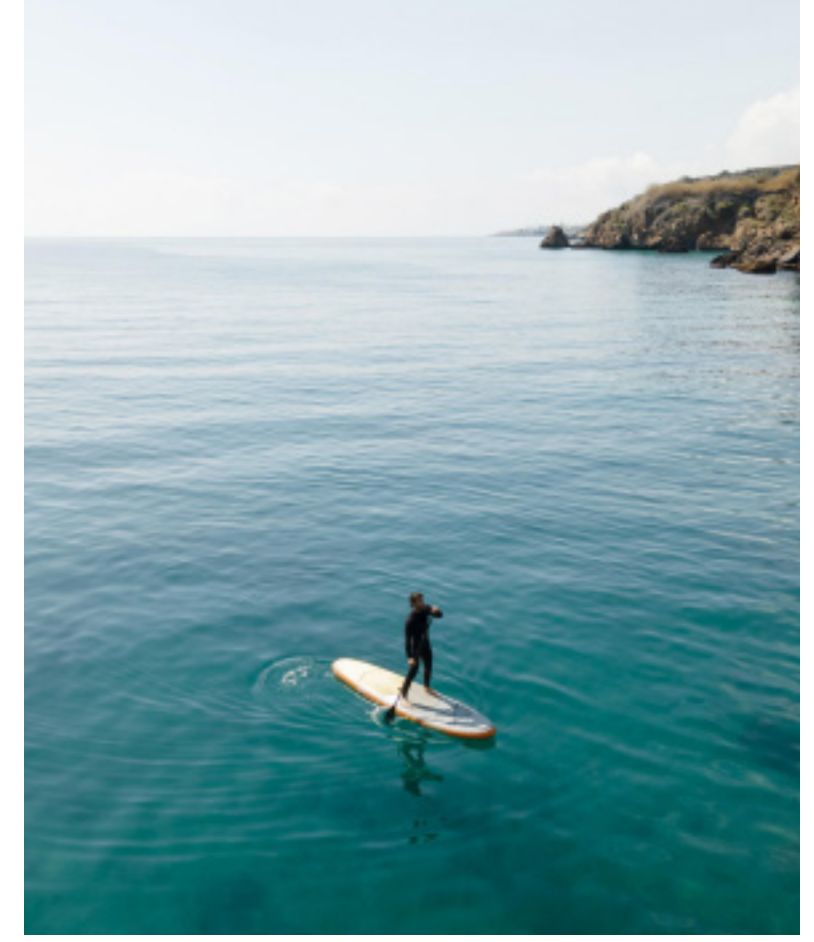
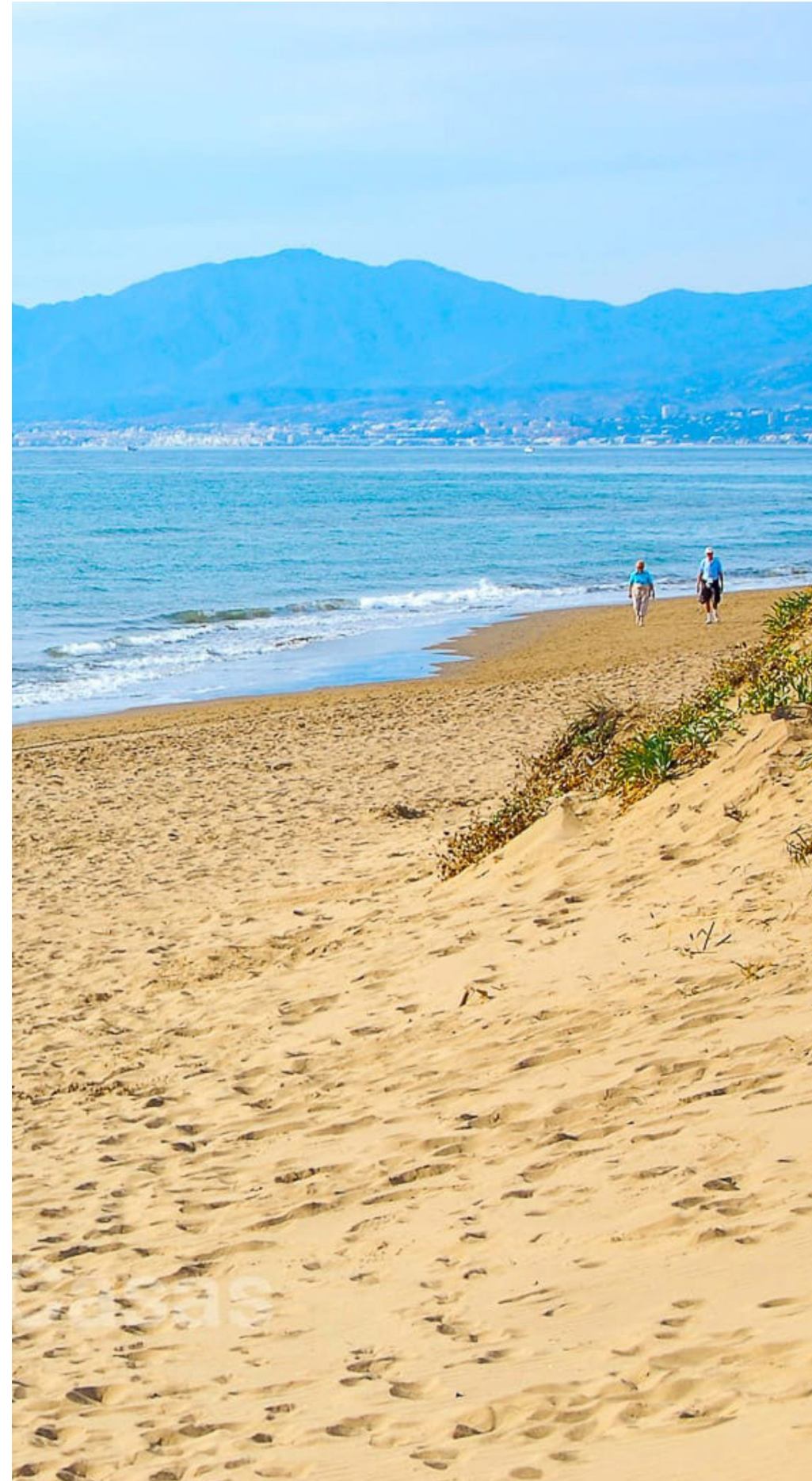
THE AREA

La Cala Golf

Nestled in the heart of the Costa del Sol, La Cala Golf is Europe's largest golf resort, offering an unparalleled experience for golf enthusiasts. With three championship 18-hole courses, a top-tier golf academy, and breathtaking views of the surrounding mountains and the Mediterranean Sea, it's a haven for players of all levels.

Just steps away from the beach and the enchanting charm of Andalusia!

For sports and leisure lovers, this area is a true paradise, offering top-notch golf courses, tennis and padel courts, kids areas, the stunning "senda litoral," and a charming town just steps away. Whether you're seeking an active day or a peaceful moment by the sea, La Cala de Mijas has it all with a touch of elegance.



THE PROJECT

48 exclusive homes

The Residences is an exclusive private residential project comprising 48 homes in a natural setting, located frontline golf on one of the finest golf courses in Europe.

The project offers

1- and 2-bedroom residences, each featuring spacious terraces that invite relaxation while enjoying the breathtaking views of the natural surroundings.





1 & 2 Bedrooms



Gym



111m²
- 192m²



Gastrobar



High Qualities



Spa, sauna and hydromassage

INTERIORS

The highest standards

Contemporary kitchens, underfloor heating, the highest qualities and open-plan spaces ensure exceptional comfort and high energy efficiency.

North and South-east facing, they offer breathtaking views of the sea, golf course, and mountains, as well as spectacular sunrises and sunsets.





**Open-plan
Kitchens with
spectacular views!**



AMENITIES

Designed for your well-being

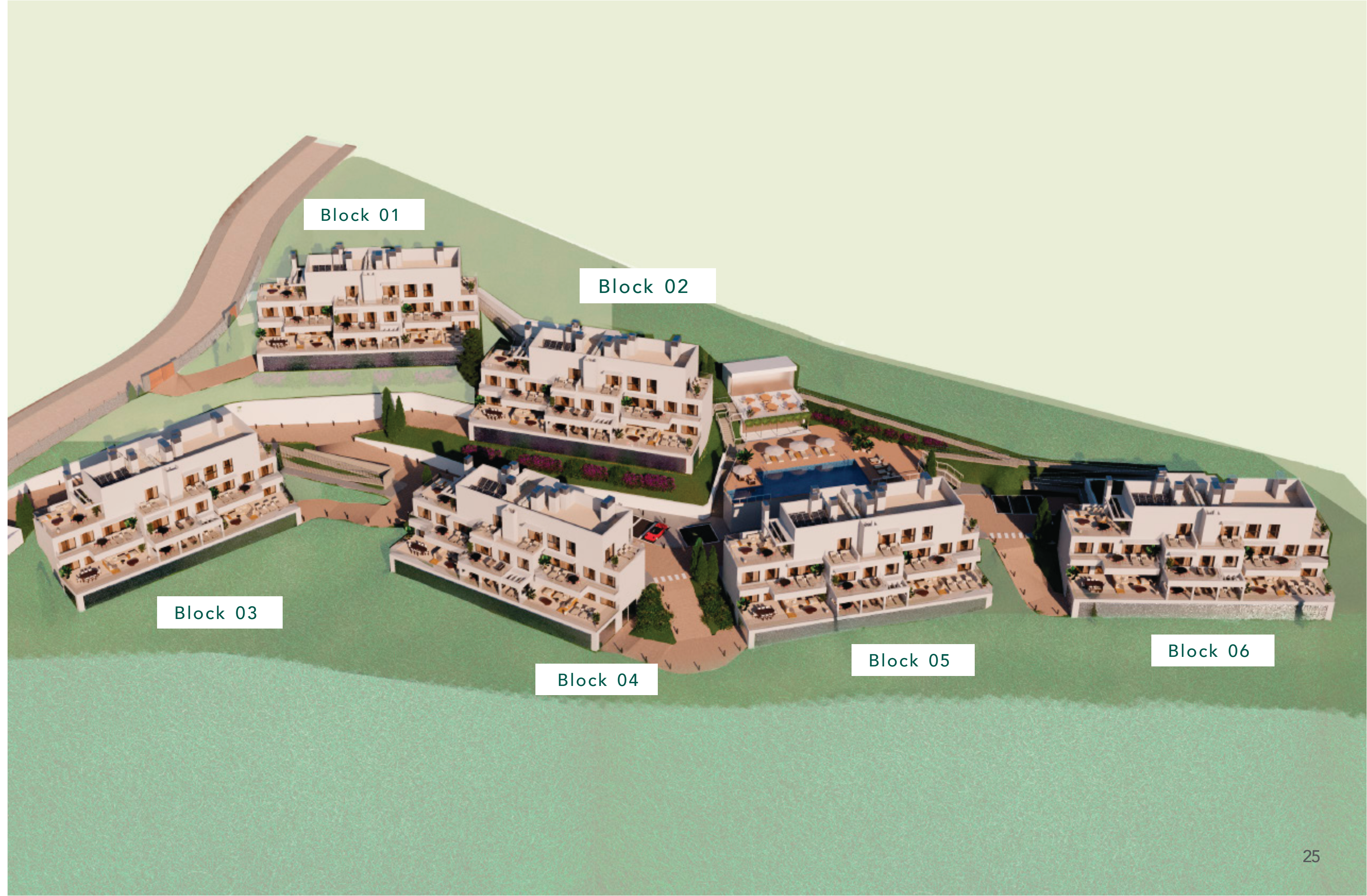
The Residences offer a wide range of premium amenities designed for your well-being. The project features a luxurious indoor wellness area with sauna, spa and hydromassage, a fully equipped gym and changing rooms to maintain an active lifestyle, and an infinite outdoor pool with sun lounge area perfect for relaxing under the Mediterranean sun all year-round.



FLOORPLANS

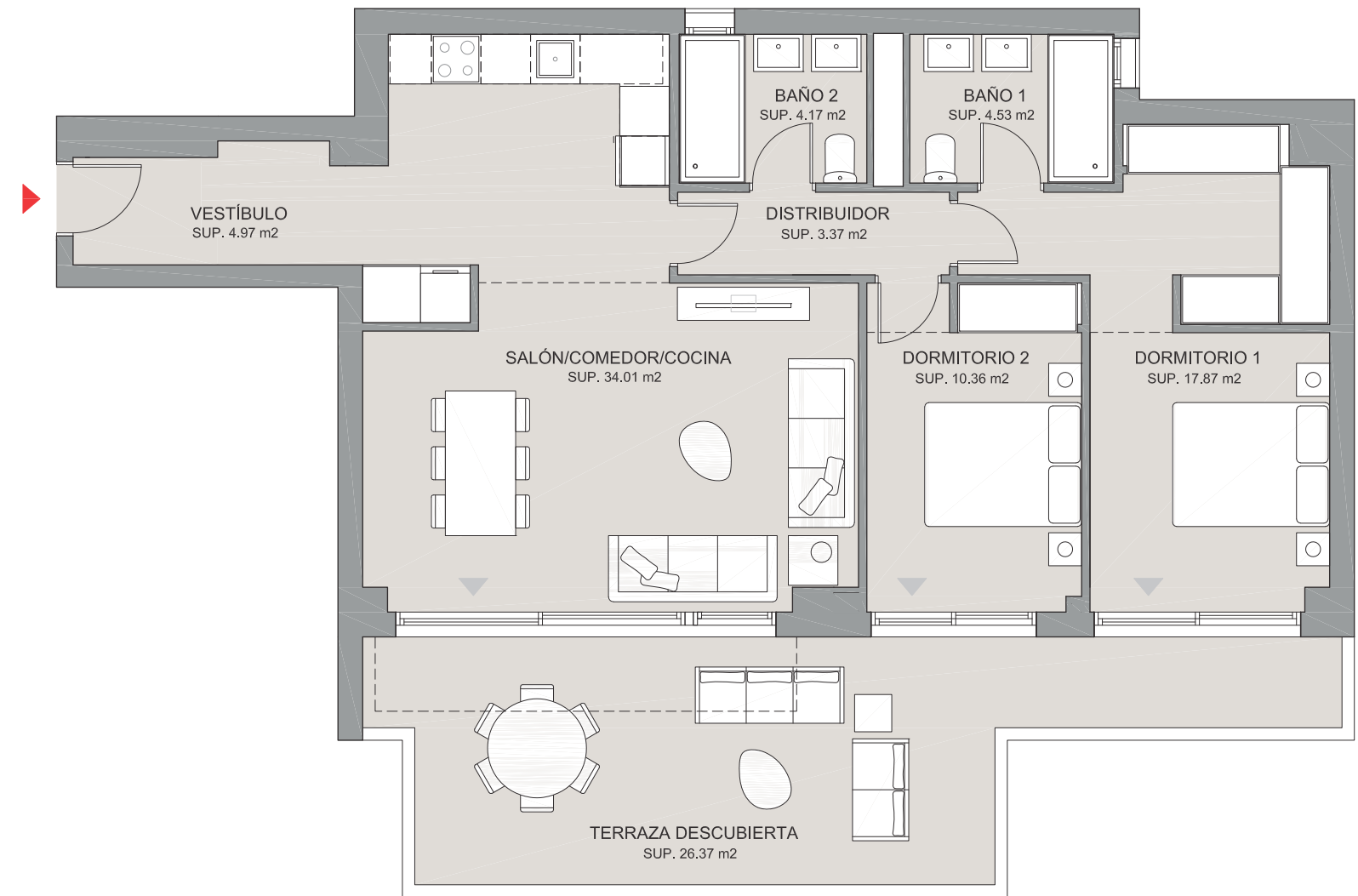
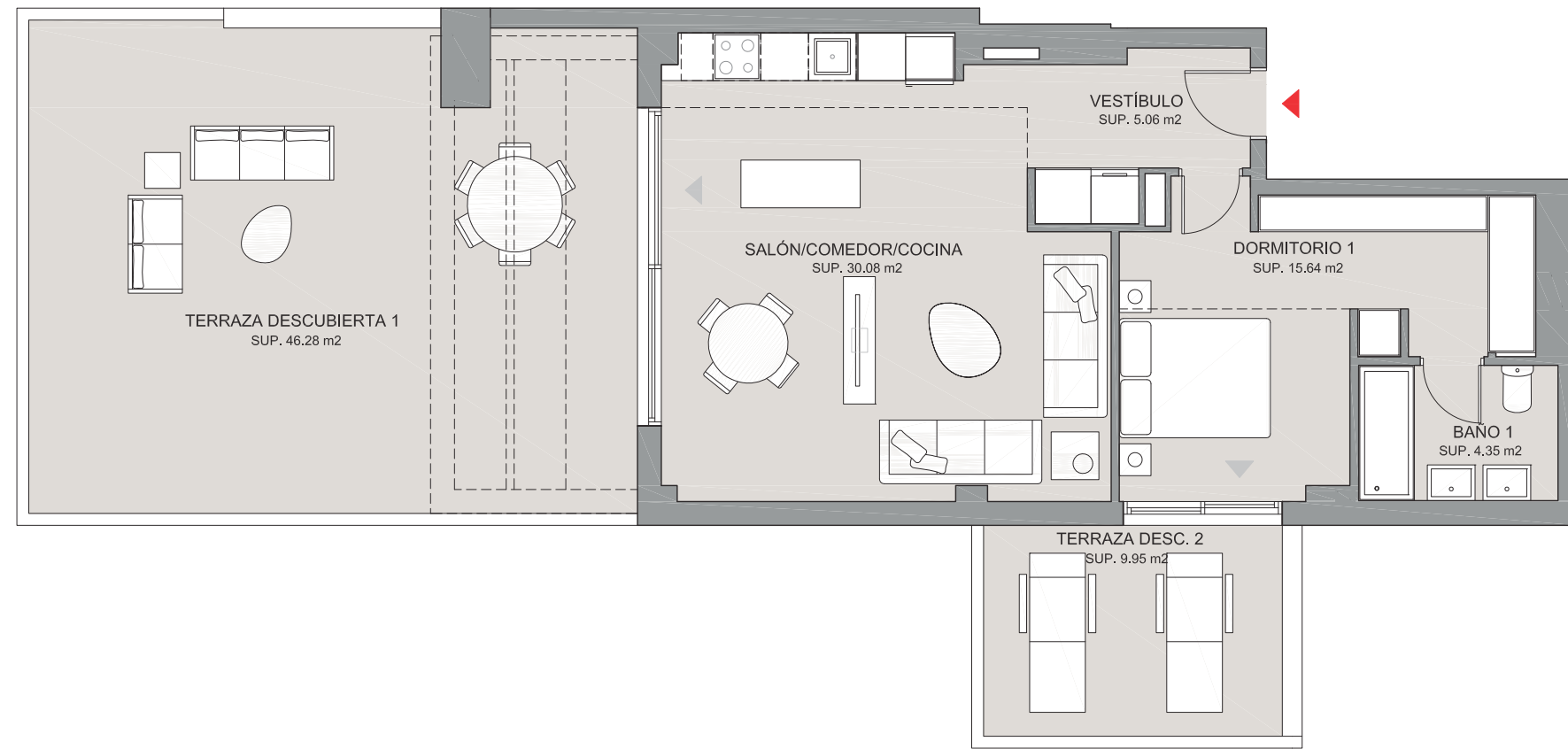
1 & 2 Bedrooms

The Residences is an exclusive community comprised of 6 boutique blocks, each housing just 8 carefully designed 1 and 2 bedroom apartments (optional 3). Every residence boasts expansive terraces, perfect for soaking in the serene natural views and sunsets.

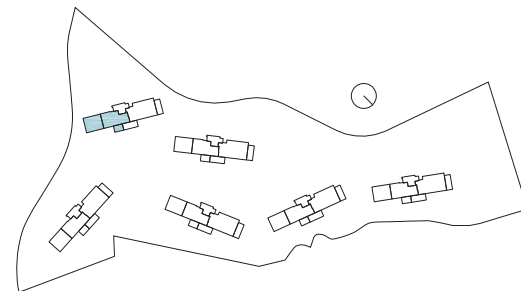


TYPE 1
1 BEDROOM
PENTHOUSE

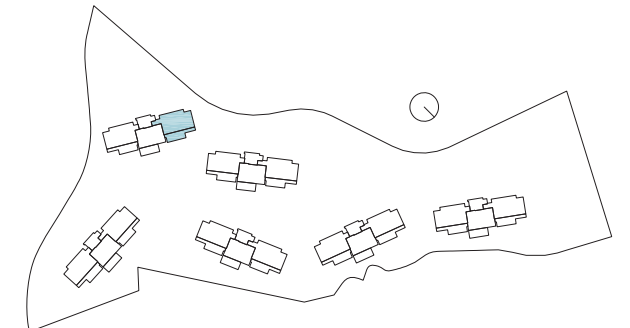
TYPE 2.1
2 BEDROOMS
FIRST FLOOR



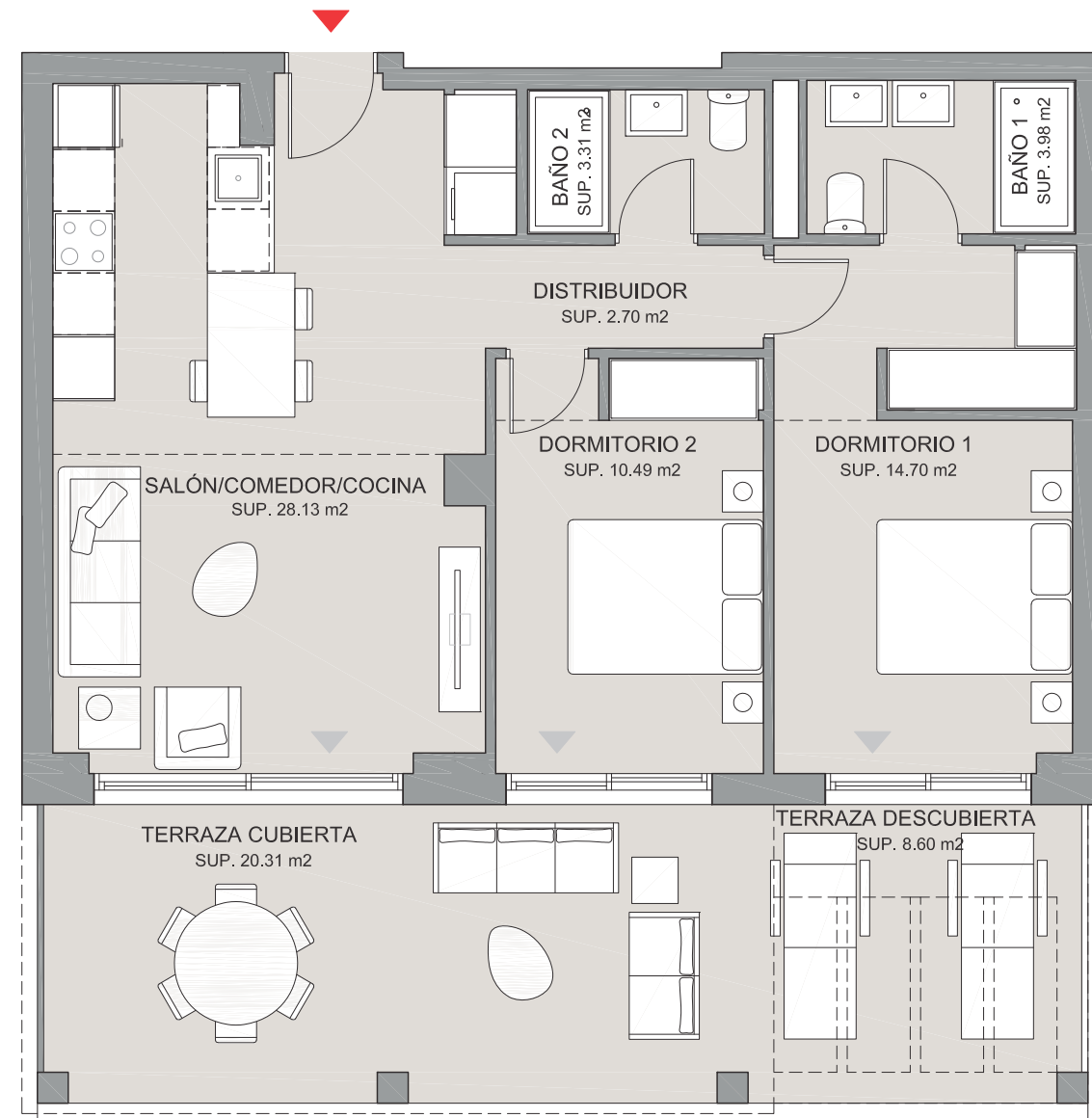
| | |
|----------------------|----------------------|
| Built Area | 79,16m ² |
| Covered Terrace Area | 61,98m ² |
| Total Area | 141,14m ² |



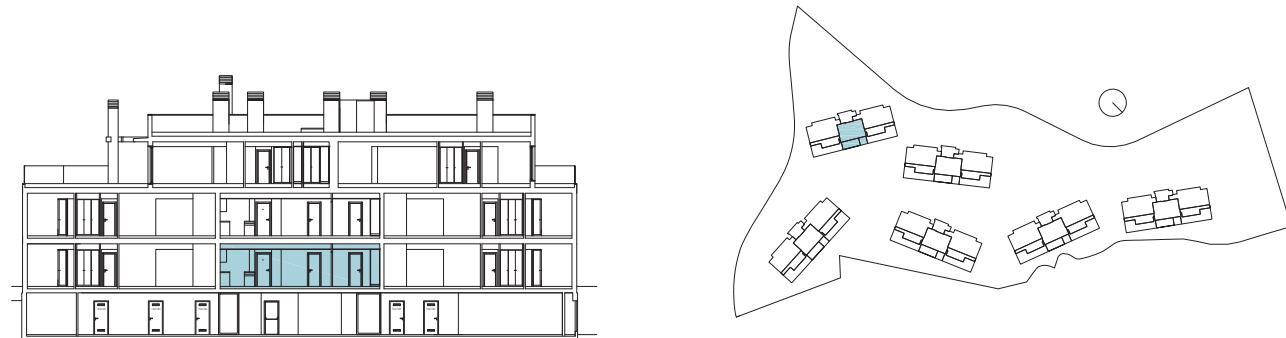
| | |
|------------------------|----------------------|
| Built Area | 114,49m ² |
| Uncovered Terrace Area | 28,91m ² |
| Total Area | 143,40m ² |



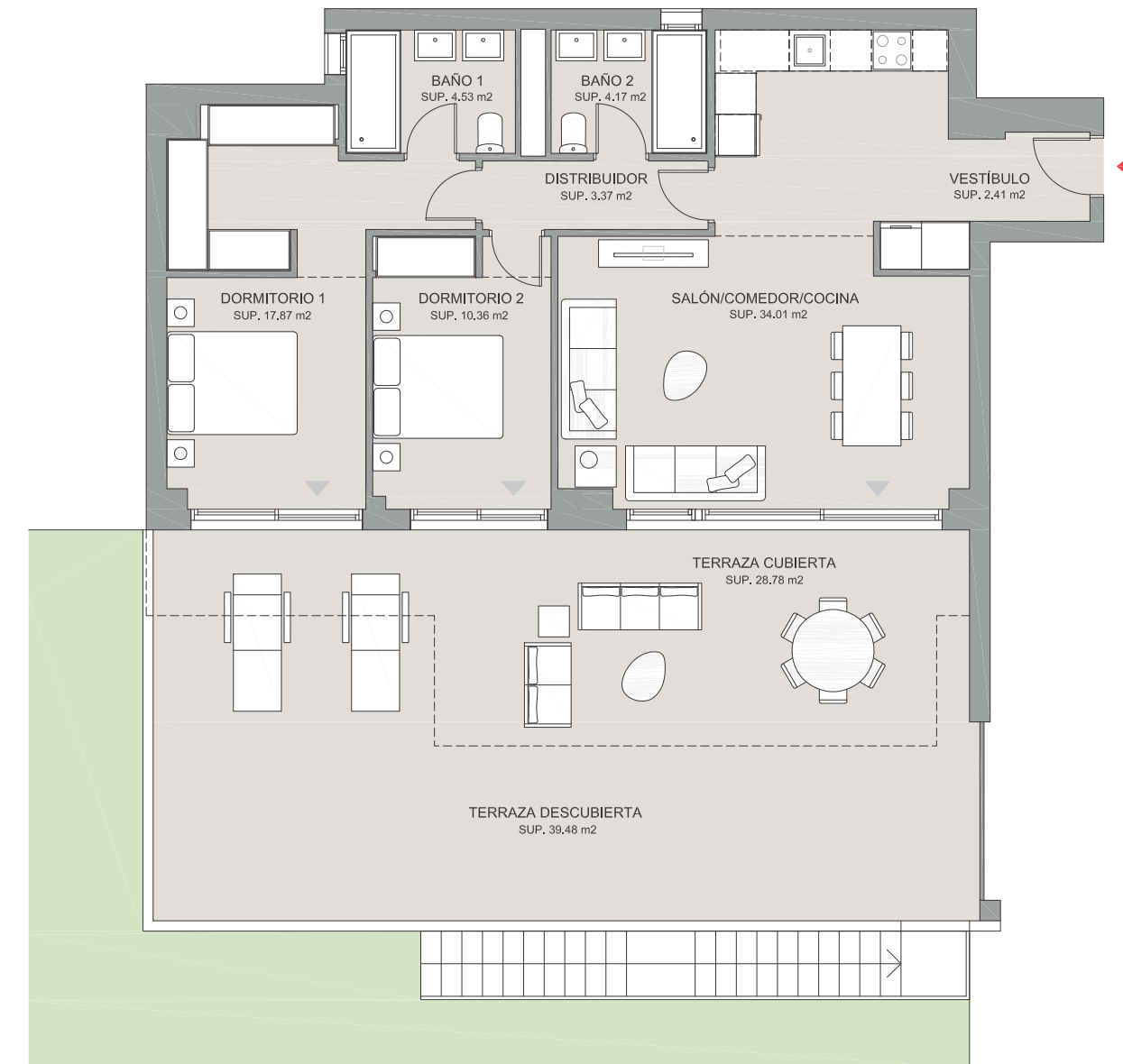
TYPE 2.2B
2 BEDROOMS
GROUND FLOOR



| | |
|------------------------|----------------------------|
| Built Area | 88,27m ² |
| Covered Terrace Area | 21,36m ² |
| Uncovered Terrace Area | 9,57m ² |
| Total Area | 119,20m² |



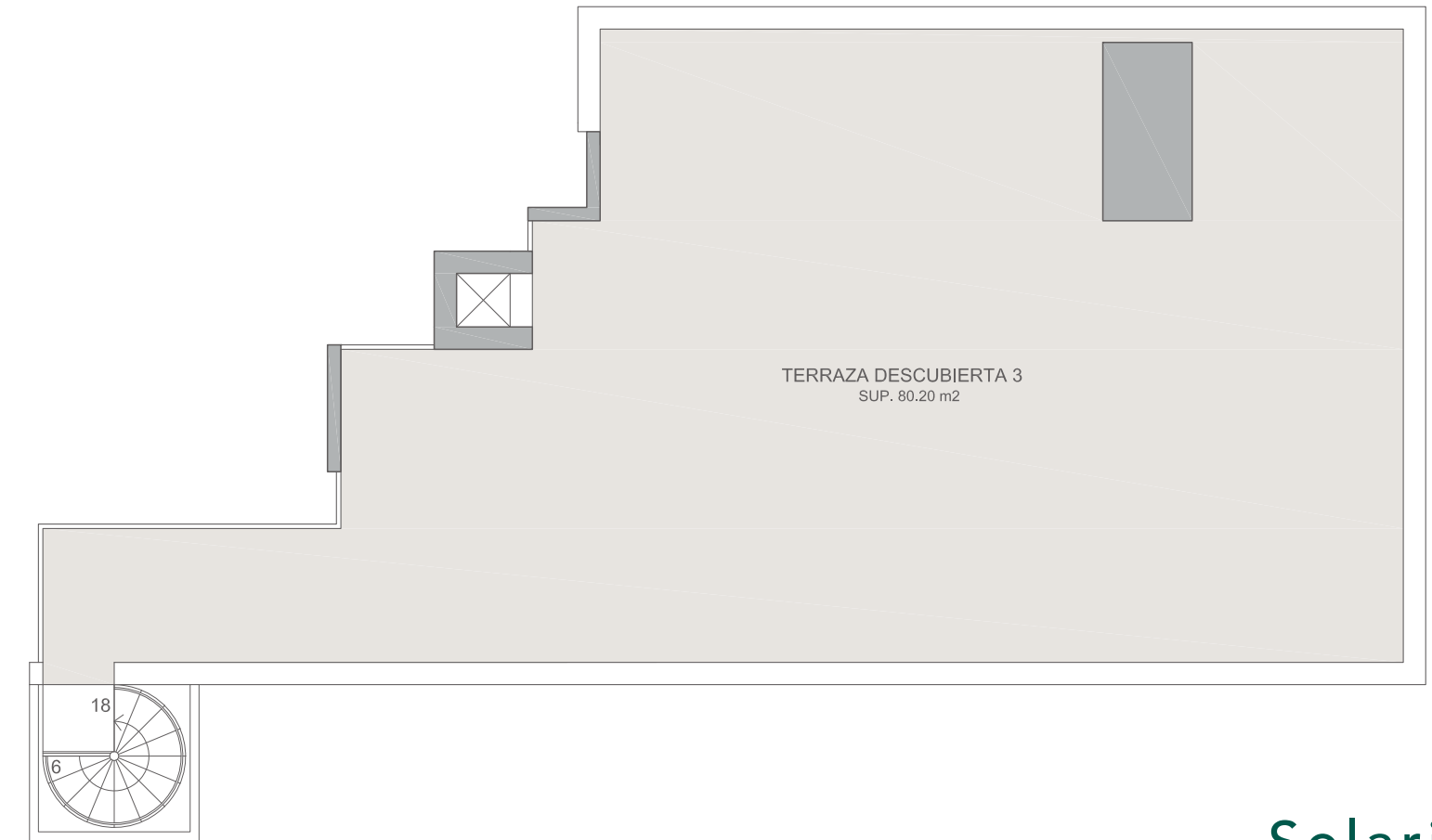
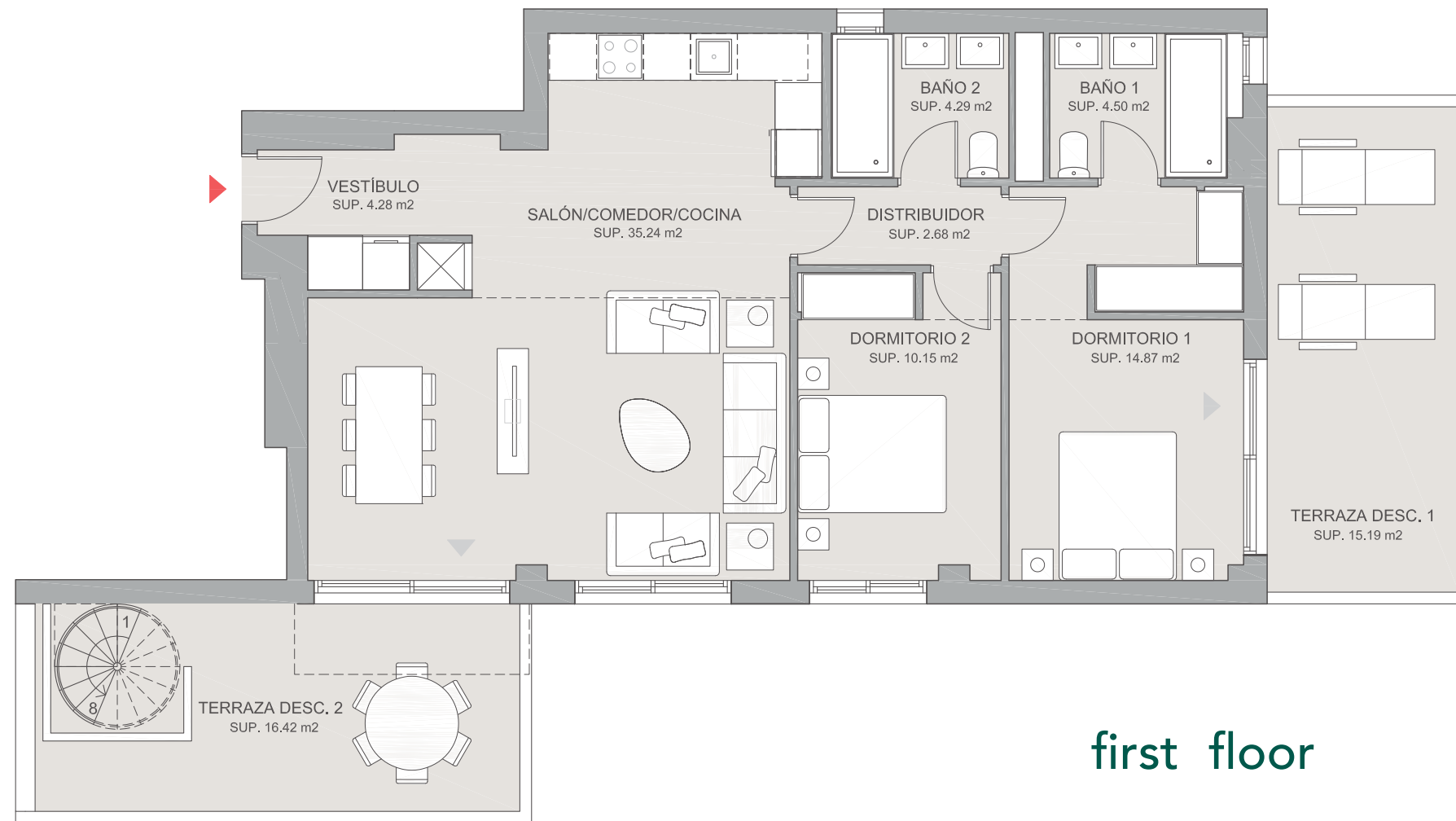
TYPE 2.3B
2 BEDROOMS
GROUND FLOOR



| | |
|------------------------|----------------------------|
| Built Area | 111,15m ² |
| Covered Terrace Area | 28,91m ² |
| Uncovered Terrace Area | 42,13m ² |
| Total Area | 182,19m² |



TYPE 2.4
2 BEDROOMS
PENTHOUSE



Solarium

| | |
|------------------------|----------------------|
| Built Area | 109,57m ² |
| Uncovered Terrace Area | 123,80m ² |
| Total Area | 233,37m ² |

