



SURROUNDINGS

← VALLE ROMANO
GOLF RESORT
10 kms - 10'

← ESTEPONA GOLF
7 kms - 9'

← FINCA CORTESIN
HOTEL GOLF & SPA
1 kms - 4'

DOÑA JULIA GOLF CLUB →
2 kms - 3'

PUERTO LA DUQUESA →
5 kms - 10'

GIBRALTAR →
40 kms - 45'

Location

Casares is probably one of the most beautiful towns in Spain. Declared a Historic-Artistic Site in 1978, its municipal area stretches from the last southern folds of the Ronda mountain range to the Mediterranean Sea, where you can enjoy the best of the mountains and the beach at the same time.

Casares Costa offers a wide range of leisure and entertainment options together with first class golf courses, extensive beaches, marinas and a varied repertoire of restaurants that will allow you to enjoy the best the Costa del Sol has to offer.



Amenities and Transport Links

Offering various golf courses within a radius of just 15 minutes, including the Casares Costa Golf complex, where the spectacular Finca Cortesin Golf & SPA is located, next to the development, which retains its title as the best golf resort in Europe.

With plenty of sunshine days, Casares offers wide expanses of beaches just a few minutes away, as well as the water sports at the Estepona and La Duquesa marinas. Quick access to the main roads means that all types of health, education and leisure facilities are close by.



GOLF:

- La Duquesa Country Club
- Doña Julia Golf Club
- Finca Cortesin Hotel Golf & Spa
- Estepona Golf
- Valle Romano Golf
- Casares Costa Golf



HEALTHCARE FACILITIES:

- Hospiten Estepona
- Nuevo Hospital de Estepona
- Hospital Costa del Sol de Marbella
- Hospital Quirón de Marbella



SHOPPING CENTERS:

- Centro Comercial La Cañada
- Centro Comercial El Corte Inglés
- Centro Comercial Los Halcones
- Centro Comercial Bahía Plaza



LEISURE:

- Puerto Banús
- Selwo Aventura
- AquaMijas
- Parque Trampolines



AIRPORTS:

- Aeropuerto de Málaga-Costa del Sol
- Gibraltar International Airport
- Aeropuerto Internacional de Jerez



BUS LINES:

- L-77 Hospital Costa del Sol - Estepona - Casares
- I-604 Málaga-Aeropuerto-Marbella-Estepona-Algeciras



MARINAS:

- Puerto Deportivo de Estepona
- Puerto Deportivo La Duquesa
- Puerto Deportivo Sotogrande
- Marina de Puerto Banús



HIGHWAYS:

- AP-7
- A-7



RESIDENTIAL COMPLEX

The residential complex has a total of 134 homes with 2, 3 and 4 bedrooms distributed in 9 blocks, whose avant-garde and modern design blends in with the adjoining golf course.

Its west-southwest orientation provides maximum use of natural light and views that allow you to contemplate the surrounding natural landscape, some with sea views.

The communal areas have been designed with sustainability in mind, including a wide variety of equipment and top quality facilities.

The residential complex, built on 2 and 3 floors, has pleasant communal areas including gardens, swimming pool and gymnasium. In addition, there are 166 parking spaces and 134 storage rooms in the basement of the development.

PROPERTY DESCRIPTION

Designed to adapt to your every need. It offers 2, 3 and 4 bedroom homes where design and comfort fuse to create a highly attractive property.

As with all our developments, we offer a high level of quality in their finishes, with a practical and modern layout optimizing maximum use of space, without losing aesthetics and style.

Large and luminous living and dining rooms that connect and are complemented by spacious balconies. Open-plan kitchens, fully equipped with low-consumption appliances, in accordance with criteria of sustainability, practicality and comfort.



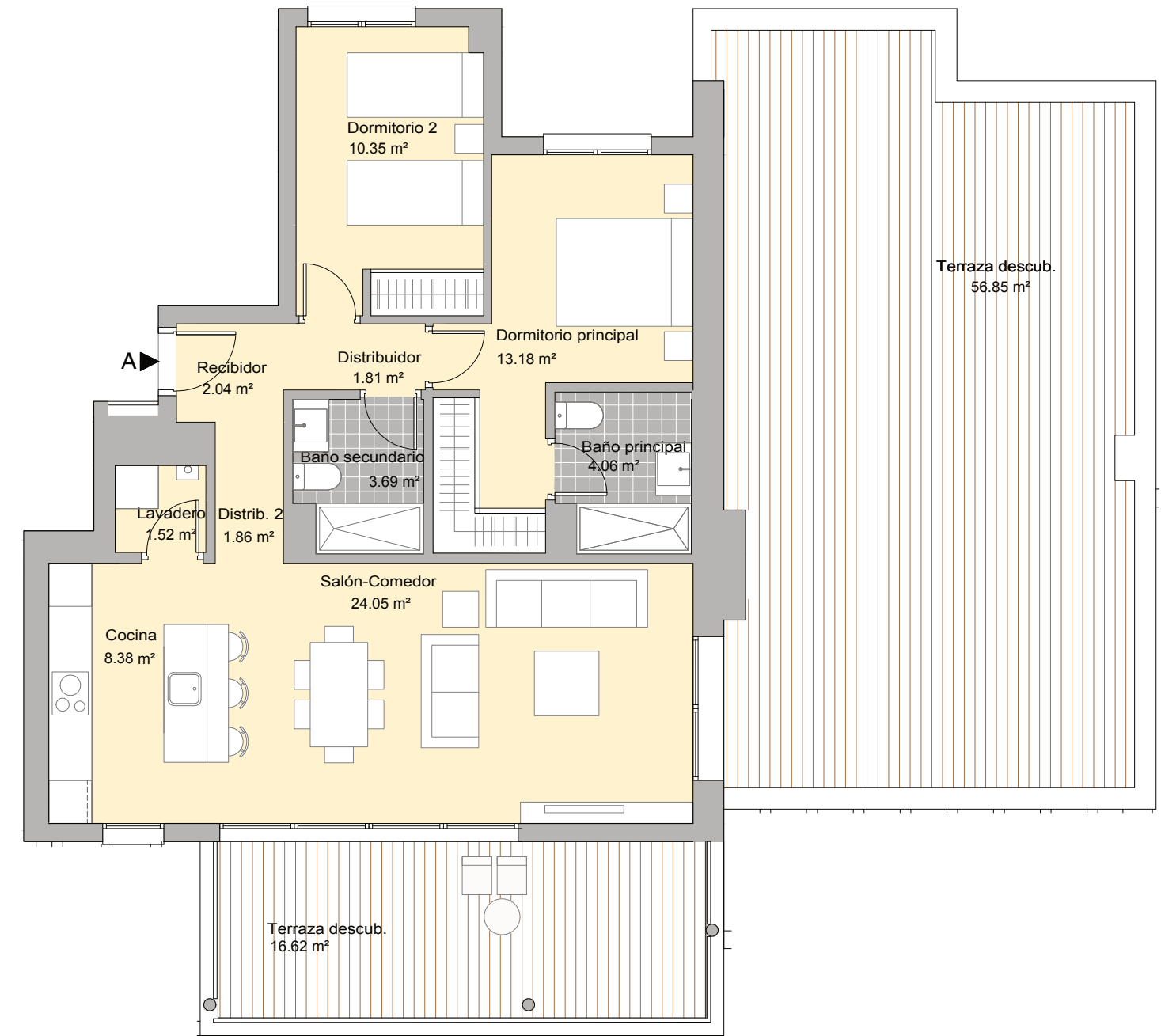


PERSONALISATION

Your new home and we strive to surpass all your expectations and desires. To this end, we let you personalise your home with exclusive designs crafted by our architects and interior designers.

You can choose from the various specs included in our dossier, all of them in keeping with the elegance for which our homes stand out.





2 BEDROOMS
BLOCK 5
PORTAL 10
SECOND FLOOR
DWELLING A

PLANTA SÓTANO

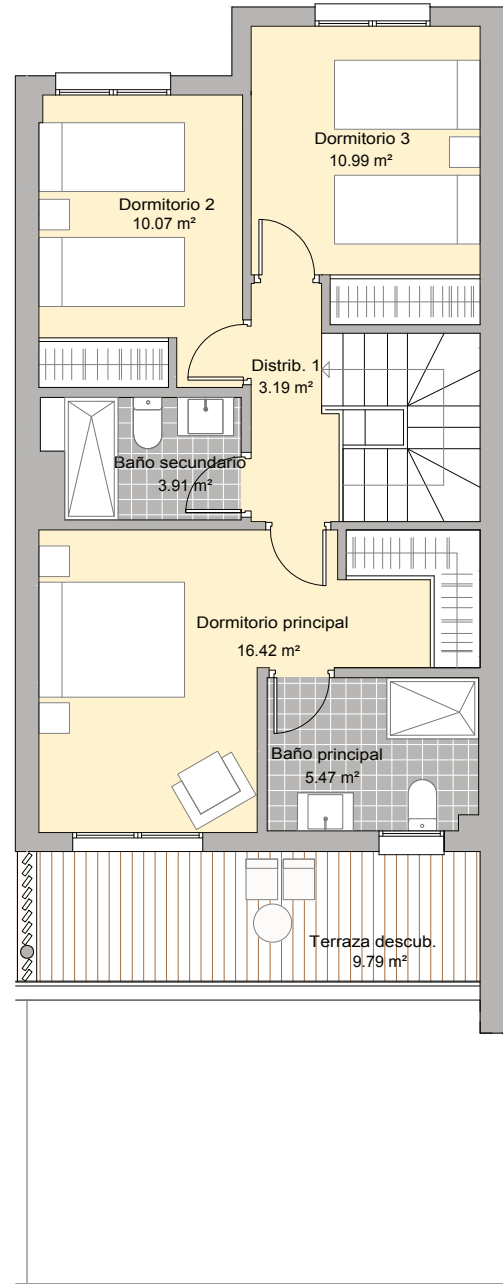
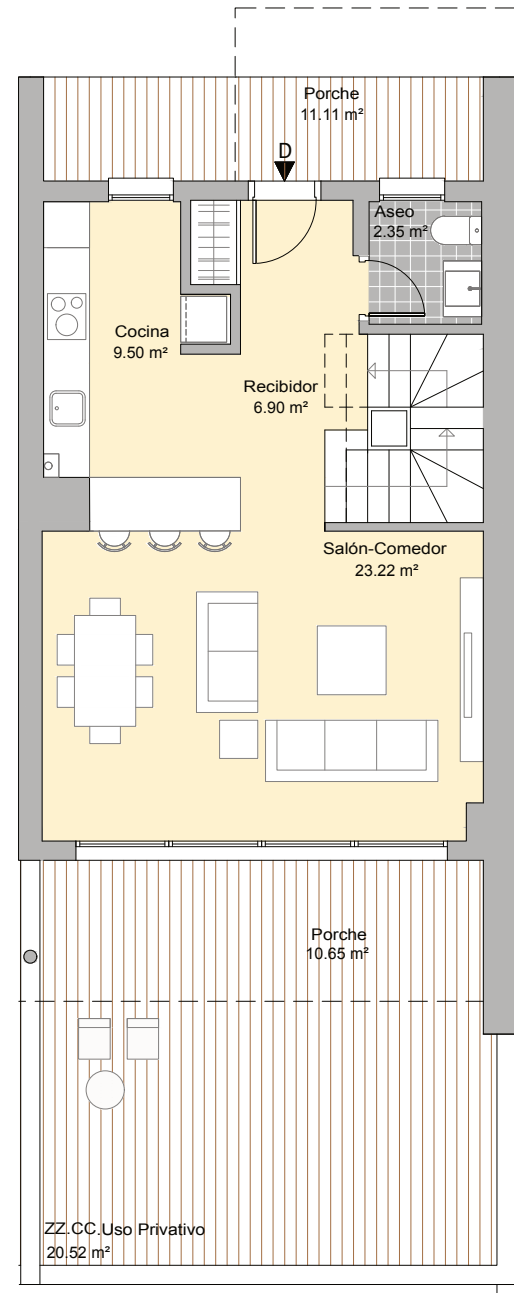
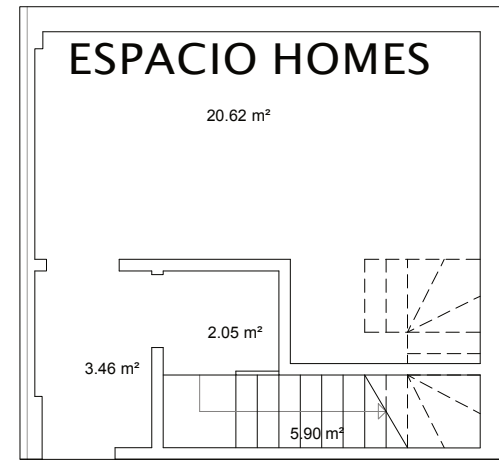
PLANTABAJA

PLANTAPRIMERA

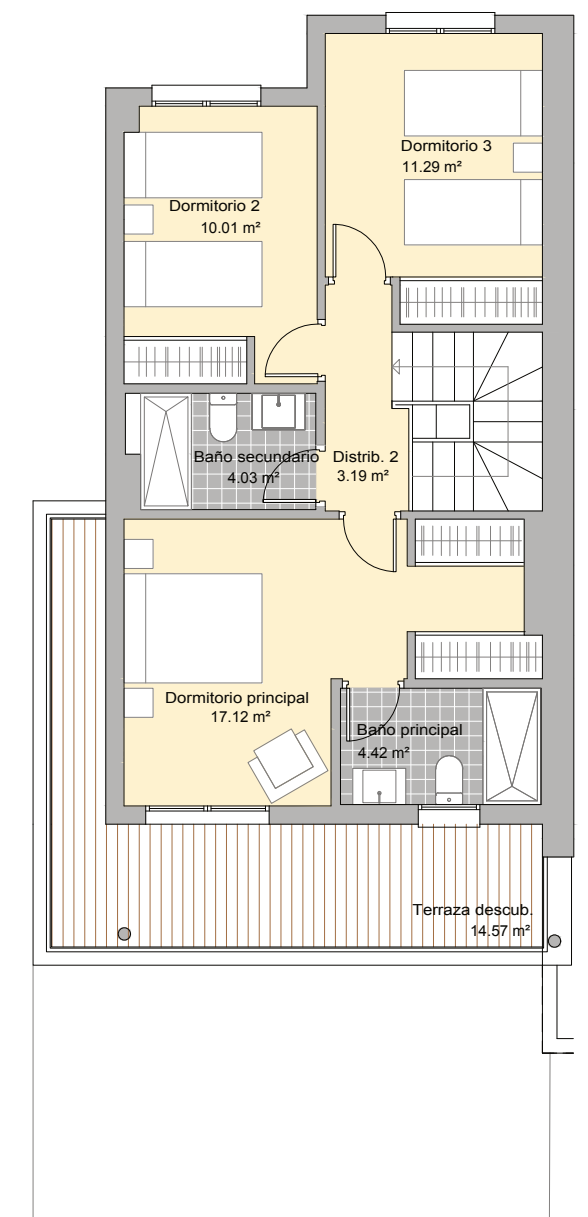
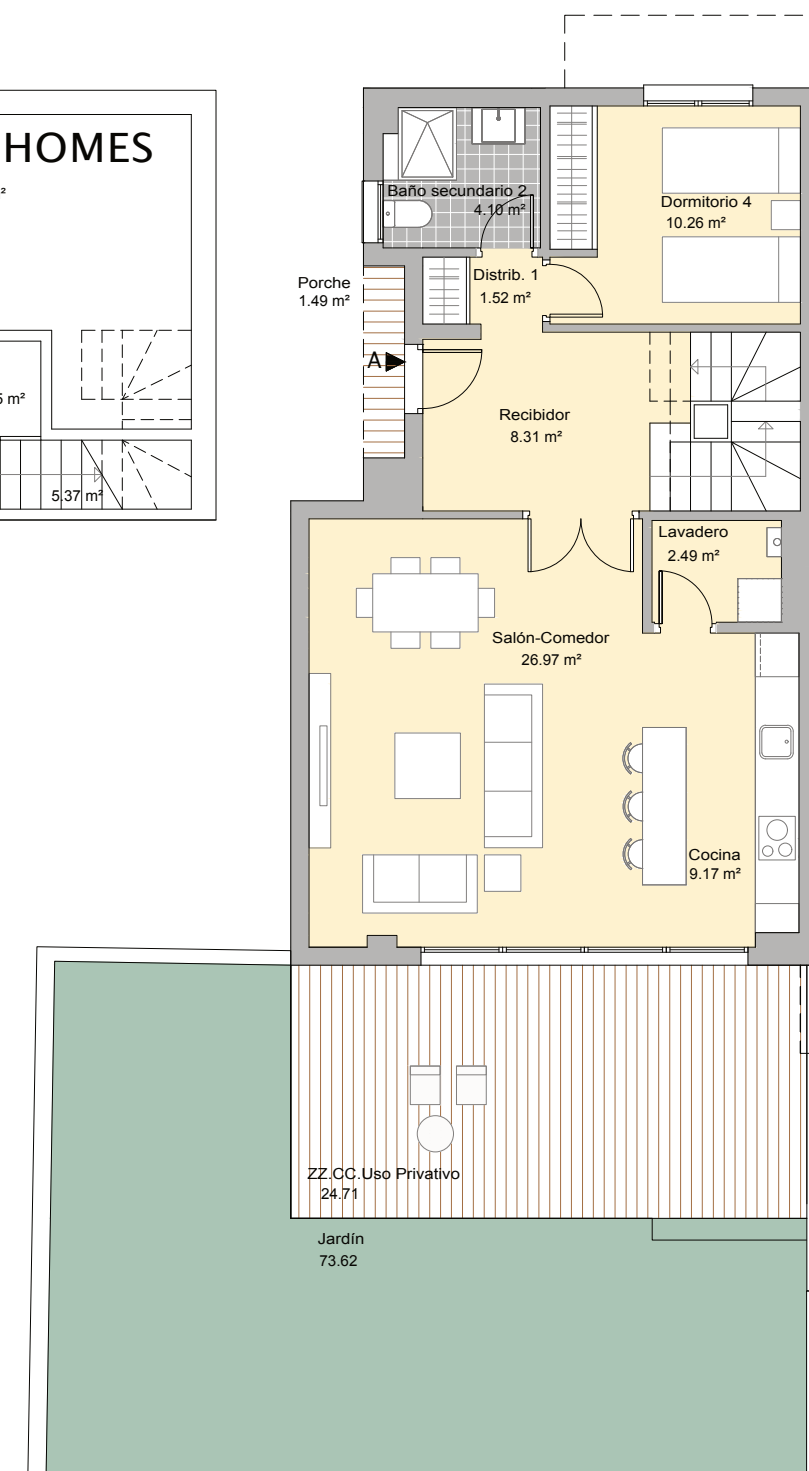
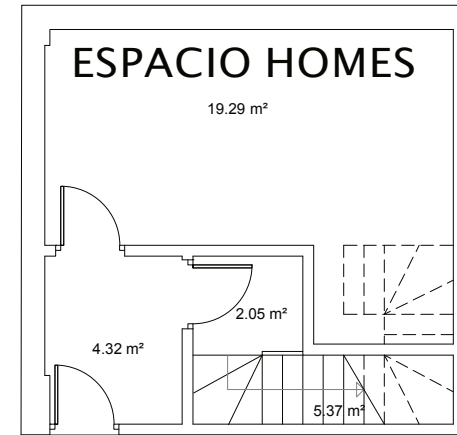
PLANTA SÓTANO

PLANTABAJA

PLANTAPRIMERA



3 BEDROOMS
BLOCK 2
PORTAL 4
GROUND FLOOR
DWELLING D



4 BEDROOMS
BLOCK 3
PORTAL 5
GROUND FLOOR
DWELLING A